

TecnoRampaTM



**Mechanical
dock
leveler**

tecnorampa.us

- The pit-style mechanical dock leveller creates a smooth, level surface between the loading dock and the dock. smooth, level surface between the loading dock and a vehicle, adjusting to the a vehicle, adjusting to the different heights of the conveyor for safer operation.

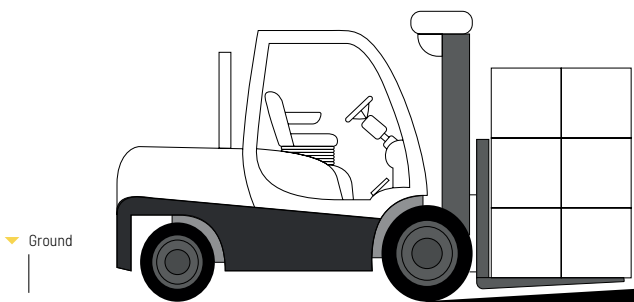
Mechanical lock leveler



CAPACITY 30,000 AND 40,000 LBS	
Measures	Lip
6' x 8'	16", 18", 20"
6' x 7'	
6' x 6'	
7' x 8'	
7' x 7'	
7' x 6'	

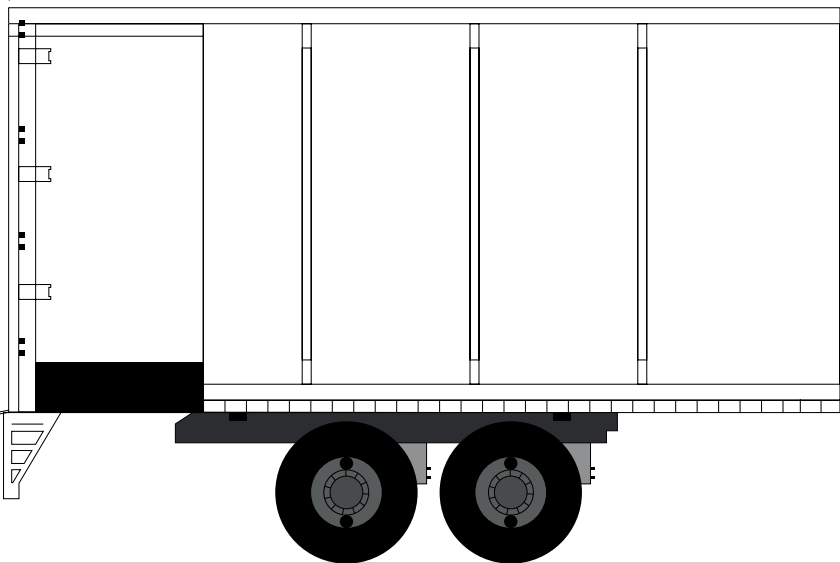
- ▣ The platform levelers allow safe loading and unloading operations, and guarantees the comfort of maneuvering.

We have different capacities and dimensions to suit your needs.



▶ Loading lock leveler

Truck ▼



- ▶ Being a manufacturer allows us to have alternatives for specific needs.

□ We are manufacturers

Meets **ANSI MH30.1-2022 / ANSI MH30.2-2022** standard.

- For further details on these regulations and the industry standards applicable to this product, please contact:



American National Standards Institute (ANSI)
1430 Broadway, New York, NY 10018
+1 212.642.4900
www.ansi.org



► SAFETY

Full control

Heavy-duty tension springs.

Automatic locking lip by means of a mechanical system.

High visibility safety fixed side guards.

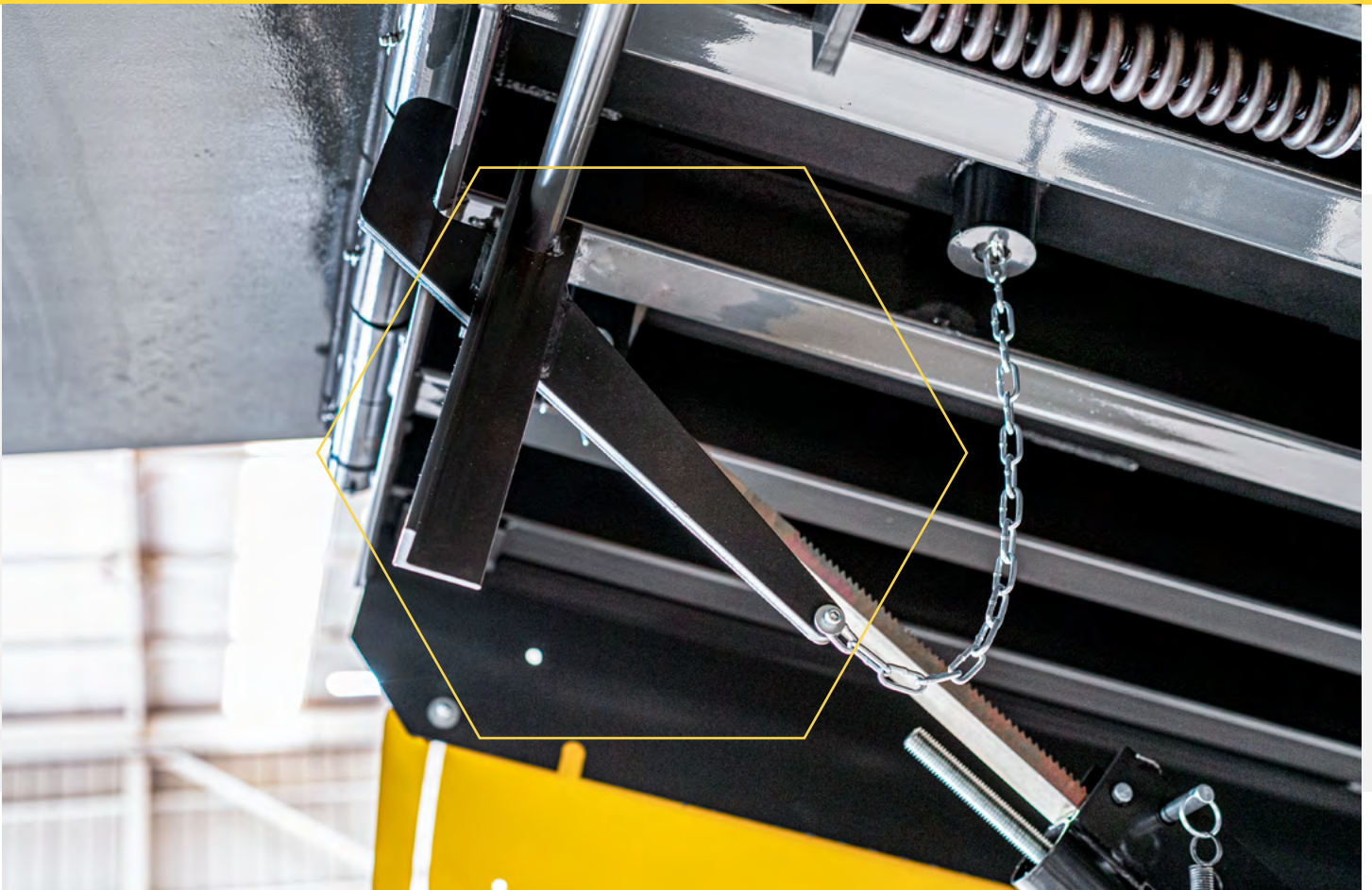
The safety brake rack system holds the ramp, avoiding accidents. It counters the movement of the platform thus matching with the suspension of the truck

Safety bar to hold the platform during maintenance and inspection.





- ▶ Hand operated lifting chain
It requires minimum effort
to deploy the dock leveler



□ Description



- ▶ The bottom is made with a 3x4" PTR and a 6"x4"x1/4" central HSS.

- ▶ 5/8" thick non-slip lip plate.

- ▶ In all our models we include guards.



- ▶ The mechanical dock leveler is built by a high-quality robust structure to allow reliability in its operation.

- ▶ 3/16 thick non-slip sheet top deck with a nominal 40,000 lb (18143.695 kg) load capacity.

- ▶ Ergonomic lifting chain, requires minimal force to unfold the platform.

□ Holdown

MODEL: FRAR-A00



**MULTI-FAB
PRODUCTS**

W141N9240 Fountain Blvd
Menomonee Falls, WI 53051
United States



Available Parts

Single Plate

THE RAMP PLATE IS ONE-PIECE THE WHOLE DECK, MADE OF A572-G-50 CARBON STEEL

30,000 LBS	40,000 LBS
3/16"	1/4"

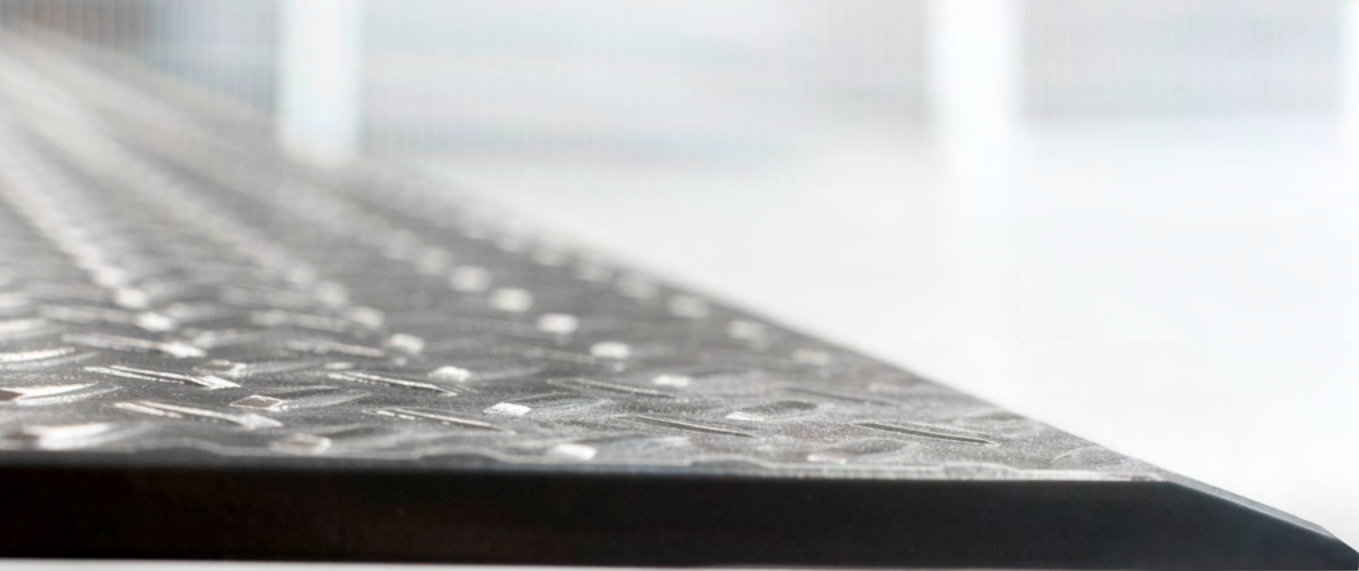
SINGLE PLATE



Lip

LIP IS A572-G-50 CARBON STEEL PLATE

30,000 LBS	40,000 LBS
1/2"	5/8"



POWDER COAT

ELECTROSTATIC

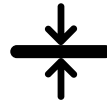
Maximum protection and durability through an advanced electrostatic paint system with a specialised oven for thermal curing.



Excellent impact, abrasion and scratch resistance, validated by ASTM D2794 and ASTM D4060 tests.



Maintains its properties and colour in temperature ranges from -20°C to 200°C, complying with ISO 2813 accelerated ageing stability.



Optimum thickness between 60 and 80 microns, complying with standards such as ISO 2360.

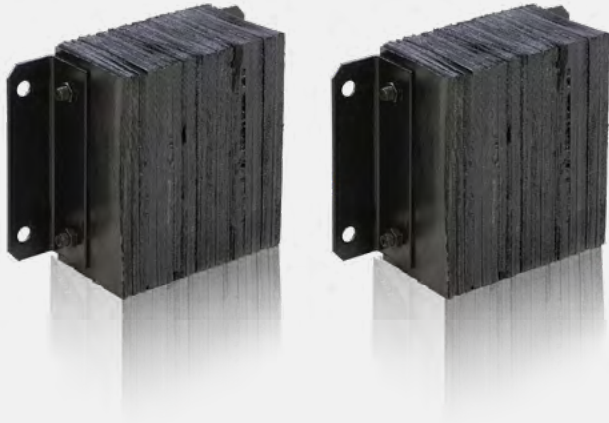


Curing of paint between 180°C and 200°C for 10 to 15 minutes, achieving a thermoset coating validated by adhesion (ISO 2409) and hardness (ASTM D3363) tests.

**2 YEARS
GUARANTEED**



□ 2 bumpers included



- Dock bumpers, (x2 included), protect your building from impact, providing the minimum space required to activate the Brake Ramp TECNORAMPA®

Technical details

Nominal dimensions:
6' x 8' (1829 mm x 2438 mm).

Nominal thickness on the platform:
3/16" (4.76 mm)

Deck dimensions:
72" X 83.375" (1829 mm x 2527 mm).

Platform dimensions:
72" x 99 1/2" (1829 mm x 2118 mm)

Structure:
3X4" PTR and a 6" x 4" x 1/4" central HSS

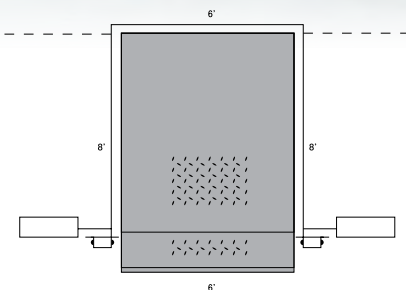
Leveling:
12" (304.8 mm) above dock level 1
2" (304.8 mm) below dock level

Standard lip:
16" (406 mm)'

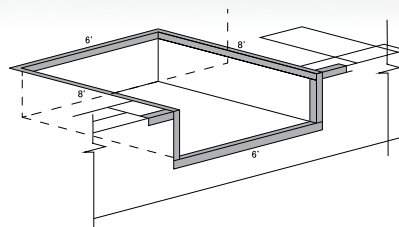
Nominal lip thickness:
5/8"

Operation system:
Mechanical

Finish:
Lead yellow / gray



Top view



Pit isometric

◀ installation

Installation requirements:

- Perimeter angle: 3" x 3" x 1/4 A-36
- Reinforced concrete pit ($f'c = 250$ kg / cm²)

TOTAL WARRANTY

Tecnorampa warrants, by and for the exclusive benefit of the original purchaser of the manufactured platform leveler, that the Product will be free from defects in materials and workmanship, subject to the following express provisions:



Pit installation requirements

TECHNICAL DETAILS OF THE PIT

NOMINAL DIMENSIONS:

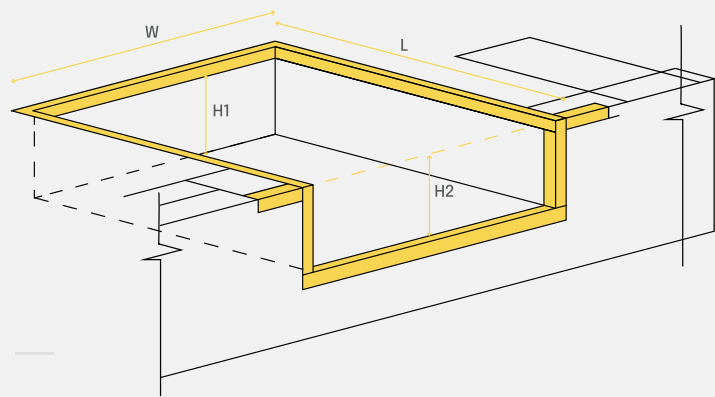
PIT WIDTH (W):
74" (1880MM)

PIT LENGTH (L):
85-1/4" (2165MM)

PIT HEIGHT (H1 AND H2): H1(REAR HEIGHT):
19-1/2" (495MM) H2(FRONT HEIGHT): 20" (508MM)

PIT MATERIAL:
CONCRETE WITH A STRENGTH OF 250KG/CM2 WITH AT
LEAST 15CM (6") THICK

ANGLE OF PIT EDGES: 3" X 3" X 1/4" ANGLE

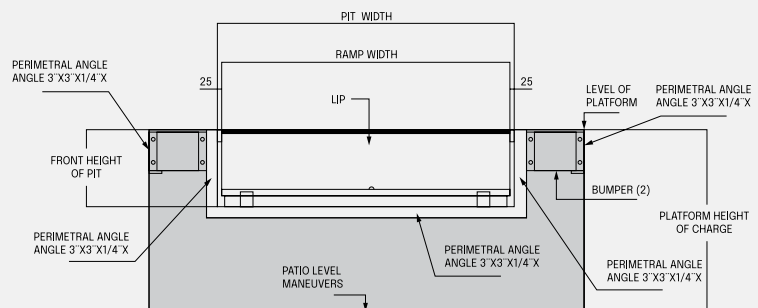


TECHNICAL DETAILS OF LEVELER

	MODEL OF LEVELER	
	RNM306X816	RNM406X816
RATED CAPACITY	30000 LBS	40000 LBS
RATED DIMENSIONS	6'X8' (1829MM X 2438MM)	6'X8' (1829MM X 2438MM)
PLATFORM DIMENSIONS	72" X 83-3/8" (1829MM X 2118MM)	72" X 83-3/8" (1829MM X 2118MM)
LEVELING	+/- 12" WITH RESPECT TO PLATFORM LEVEL	+/- 12" WITH RESPECT TO PLATFORM LEVEL
STANDARD LIP	16"	16"
OPERATION SYSTEM	MECHANIC	MECHANIC
FINISH	LEAD GREY/YELLOW	LEAD GREY/YELLOW



PRERIMETRAL ANGLE ANGLE 3" X3" X1/4" X
(MATERIAL NOT SUPPLIED BY
TECHNORAMP)



► Installation

► 7.1 POINTS TO REVIEW BEFORE UNLOADING AND INSTALLING

▣ Pit dimensions

Always use architectural plans when they are available. Check the dimensions of the pit area, to make sure that such a space is suitable and the required space is available.

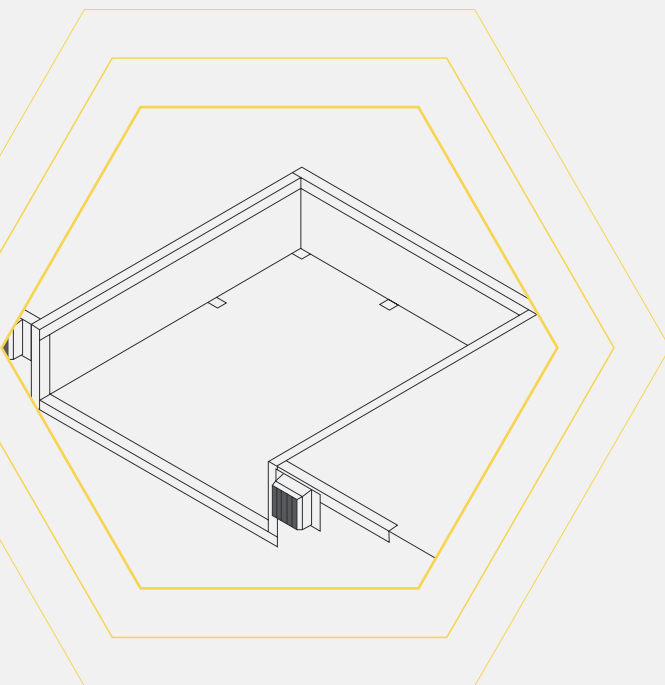
▣ Type of concrete

The ramps must be installed in concrete with a resistance of 250 kg/cm² with a minimum of 15cm (6") thick. If the concrete installed does not comply with at least this specification inform the personnel in charge and do not proceed with the installation of the leveler.

▣ Defective concrete

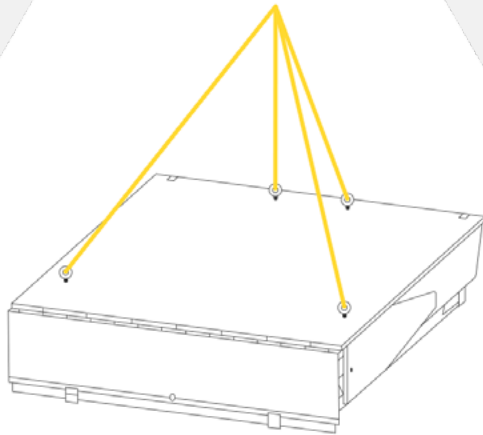
Visually inspect the area where the ramp will be installed and check for cracks or defects in the Concrete. In case of detecting any defect on the concrete, inform the supervisor or personnel in charge of the finding and do not proceed with the installation until the necessary repairs have been made.

► 7.2 INSTALLATION PROCESS



- 1** Unload the ramp and place it near the area where you will try to install it.
- 2** Remove the shipping bands and packing material from the unit.
- 3** Remove the packaging supports.
- 4** Check the quantity of all components with the parts list. If there are missing parts, please contact your ramp supplier.
- 5** Next, measure the depth of the rear corners of the platform pit and do the same with the front corners of the pit.
- 6** Place plate and sheet metal shims to match the height of the rear frame of the grader with the rear edge of the pit as shown.

► Installation



- 7 Using slings or chains for a minimum capacity of 1000 Kg, lift the ramp from the appropriate attachment points as shown below and carefully position it inside the pit. Make sure that the gap between the sides of the grader and the sides of the pit is equal. Also, check that the positioned shims are suitable for leveling the rear edges of the pit and leveler. Add or remove shims as needed.

- 8 Next, release the front lip clamping screw and pull the drive chain slightly to allow the platform to be raised slightly without actuating the lip mechanism.

- 9 Walk on the platform to return the leveler to its stored position making sure that the lip rests correctly on the front supports.

- 10 Check the front height of the platform and adjust the height with shims if required.
Note: It is recommended that the front of the leveler is always below the platform level.

- 11 Carefully inspect that the rear frame is perfectly aligned with the perimeter angle from the pit. Add or remove shims as needed.

- 12 Also inspect the height and front alignment of the ramp. Add or remove shims as needed.

- 13 Proceed to welding the rear and front frames to secure the leveler in position.
Use 1/8" 7018 weld to apply evenly spaced weld beads on the contact surface between the rear frame of the leveler and the perimeter angle of the pit. Do the same with the contact surface between the face plate of the leveler base and the front angle of the pit.

- 14 Once the leveler has been secured in its position, proceed to perform functional tests of the unit to ensure its correct operation, follow the instructions described in Section 8 OPERATION METHOD. If necessary, make the necessary adjustments following the instructions in Section 10 MECHANICAL LEVELER ADJUSTMENT.

Form of operation



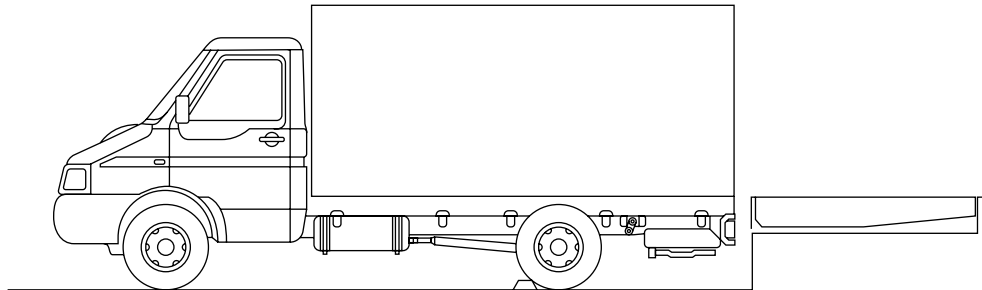
WARNING

BEFORE OPERATING THE PLATFORM LEVELER, ALWAYS IMMOBILIZE THE TRUCK WITH A RETAINER OR WHEEL CHOCKS.
DO NOT OPERATE THE PLATFORM LEVELER IF THERE IS SOMEONE STANDING ON IT OR IN FRONT OF IT.
DO NOT MANUALLY RAISE THE LEVELER LIP.
ALWAYS KEEP YOUR HANDS AND FEET AWAY FROM MOVING PARTS.
AFTER SERVICING THE TRUCK, ALWAYS RETURN THE LEVELER TO THE SAFE POSITION AT THE PLATFORM LEVEL, WITH THE LIP HELD IN THE CORRESPONDING LOCKS.
DO NOT DRIVE ON THE LEVELER UNLESS THE EDGE IS FIRMLY IN CONTACT ON THE VEHICLE PLATFORM AND HAVE A MINIMUM PROJECTION OF 4" (100 MM) ON THE VEHICLE PLATFORM.
DO NOT OPERATE THE LEVELER ABOVE ITS SET CAPACITY. DO NOT EXCEED 6.5 KM/H WHEN DRIVING ON THE LEVELER.
DO NOT DRIVE OVER THE EDGES OF THE LEVELER AND/OR THE PLATFORM STOPS (THE STOPS ARE NOT STRUCTURAL)

LEVELER LIFTING

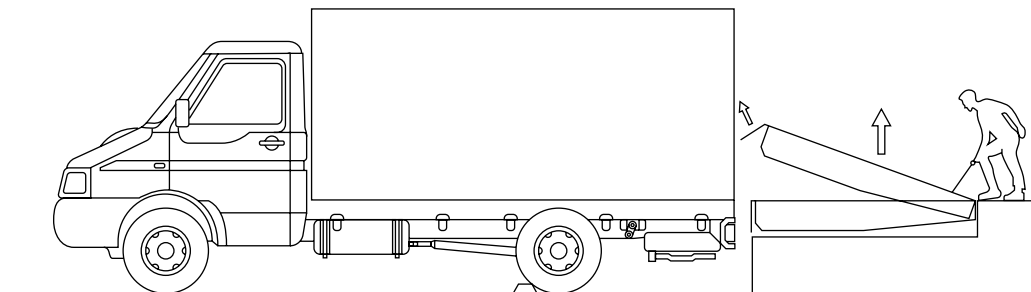
1.

Before operating the platform leveler, immobilize the truck with a retainer or wedges on the wheels



2.

To raise the leveler, pull and hold the locking release chain located on the back. When the leveler is fully raised, the lip will be extended automatically.



WARNING

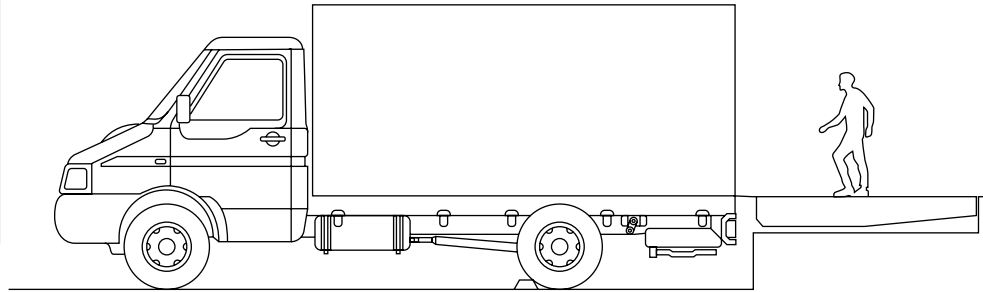
NOTE: IF THE LIP IS NOT FULLY EXTENDED, DO NOT LIFT IT MANUALLY. BRING THE LEVELER BACK TO THE PLATFORM LEVEL AND TRY AGAIN. IF THE LIP IS NOT FULLY EXTENDED, THE PLATFORM LEVELER NEEDS MAINTENANCE OR ADJUSTMENT. NOTIFY YOUR SUPERVISOR. DO NOT USE THE LEVELER UNTIL IT IS REPAIRED. FAILURE TO DO SO COULD RESULT IN SERIOUS OR FATAL INJURY.

Form of operation



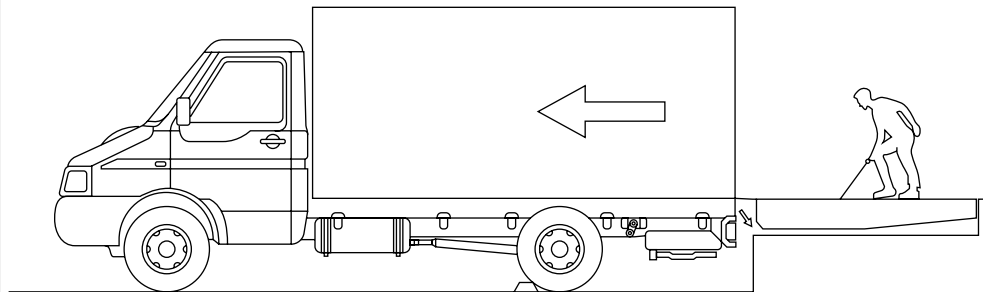
3.

Release the chain when the lip is fully extended. Walk to the front of the ramp. The platform leveler will descend until the lip rests in the truck.



4.

To bring the ramp below the platform level pull the release chain of the anti-fall mechanism on the middle front of the ramp and continue walking to the front of the ramp to lower it to the desired level.



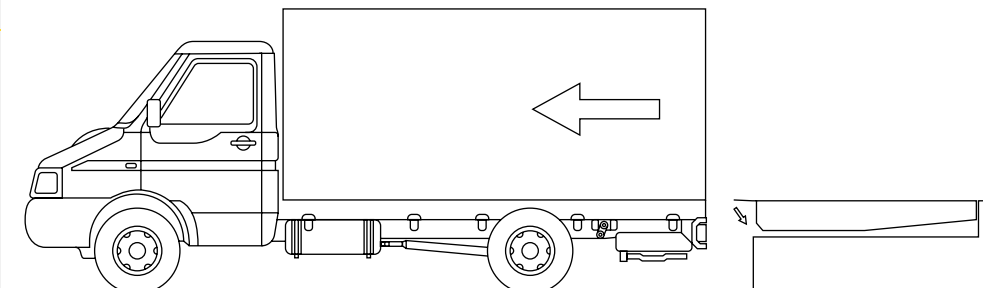
WARNING

NEVER WALK ON THE LIP OF THE LEVELER TO LOWER THE PLATFORM LEVELER.

▶ PLACE LEVELER IN THE REST POSITION

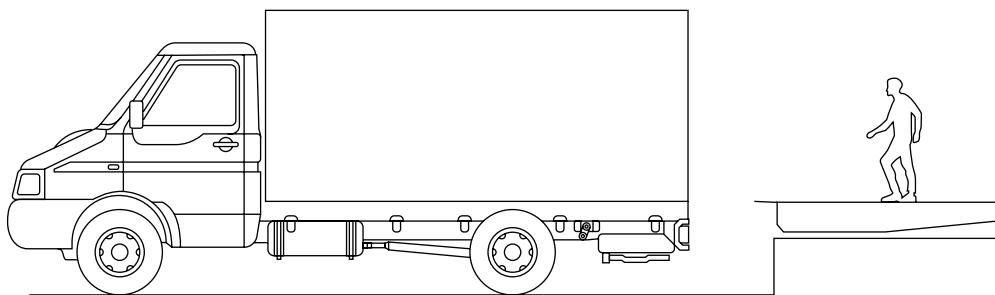
1.

To bring the leveler back to the rest position after use on a platform transport, detach the unit from the platform and the lip will drop to the rest position automatically.



2.

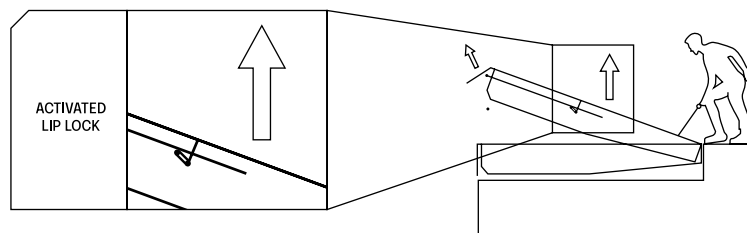
Once the lip is fully retracted and detached from the truck, pull the release chain gently to raise the leveler partially and walk to the front of the ramp. The platform leveler will descend until the lip rests on the corresponding locks.



► PLACE LEVELER IN THE REST POSITION (MANUAL LIP LOWERING)

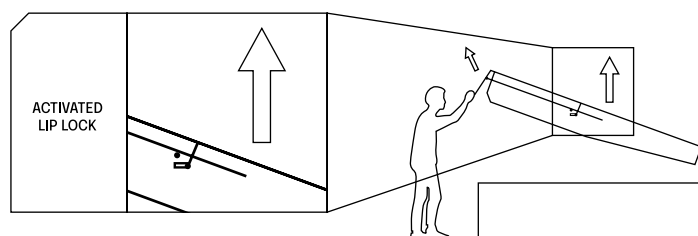
1.

To bring the leveler back to the rest position, pull the release chain gently to raise the leveler to a height of no more than 12', or in case it is completely raised the leveler walk to the front of the ramp to reach the mentioned height.



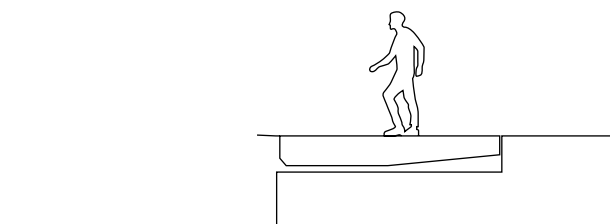
2.

Once the leveler meets the height (12'), release the lip by lifting it manually, this will release the lip lock and then let it fall gently.



3.

Once the lip is completely retracted, walk to the front of the ramp. The platform leveler will descend until the lip rests on the corresponding locks.





Maintenance of the equipment



DANGER

Before installation/maintenance/adjustment, place suitable barriers to prevent unauthorized personnel and vehicle traffic from entering the work area.



DANGER

Before carrying out any adjustment work, place the maintenance baton in position



WARNING

All repairs and maintenance work must be performed only by trained and authorized personnel.

PREVENTIVE MAINTENANCE

Every 10 days of operation check the following points:

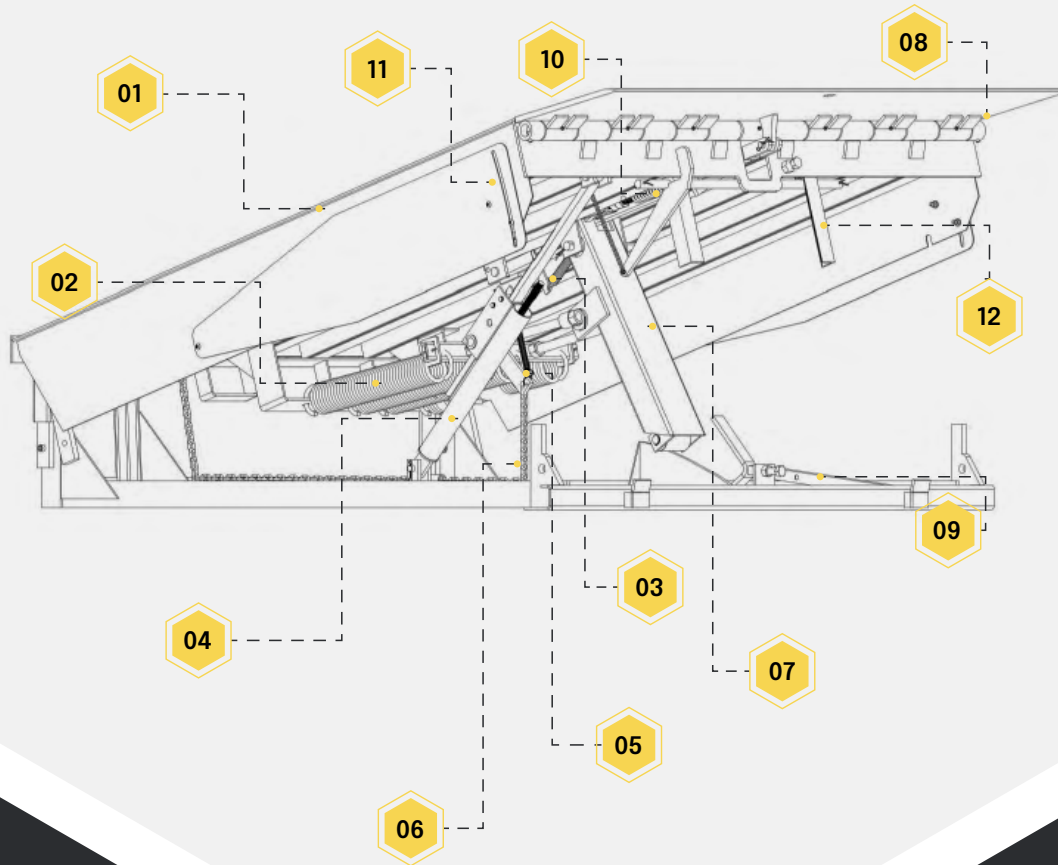
- ▶ Check for traces of materials on the lip hinge. Clean it as needed.
- ▶ Check for material debris in the area of the leveler's rear hinge and between the sides and edge angles, to ensure proper operation. Clean them as needed.
- ▶ Check the safety baton system to make sure it is working properly and has no structural defects, pull the chain and check the operation of the recoil spring.
- ▶ Check the operation of the foot guards to make sure that they are not deformed or jammed when the leveler is used.
- ▶ Check that the bolts have their cotter pin in place. Do not operate the ramp if any of the bolts do not have their insurance. Replace them if necessary.
- ▶ Check that the platform stops are present.

Every three months or every 250 hours of operation:

- ▶ Clean the inside of the pit area.
- ▶ Clean the frame and brake gears. Apply a thin layer of oil on the gears and on all sides of the frame.
- ▶ Check if the wear of the main springs and the lip lock is excessive.
- ▶ Check if the pusher Trolley assemblies and its roller are damaged.
- ▶ Check all welds under the leveler for fatigue or failure, especially the lip plate hinge, the upper plate beams, and the front hinge bar.
- ▶ Check the entire operation of the leveler. Make the required settings.
- ▶ Lubricate the lip and platform hinges with grease. Do not over-grease. Stop greasing when the grease begins to flow down the ends of the hinge tube. Remove excess grease with a cloth.
- ▶ Check all labels and warning signs. Replace them as needed.
- ▶ Check the platform stops. If they are worn out or not present replace them.



Inventory of parts



▼ NO.	▼ DESCRIPTION
01-	Mechanical ramp platform
02-	Tension spring for main ramp
03-	Tension spring with hook for lip lock
04-	Ramp brake
05-	Tension spring with hooks for brake lock
06-	Chain to operate the ramp
07-	Ramp trolley
08-	Lip
09-	Maintenance Bar
10-	Lip push spring
11-	Lateral protective Guard
12-	Anti-Fall System



VEHICLE RESTRAINT

WE ARE MANUFACTURERS

EXPLORE OUR
EXPERTISE IN:



PARTS

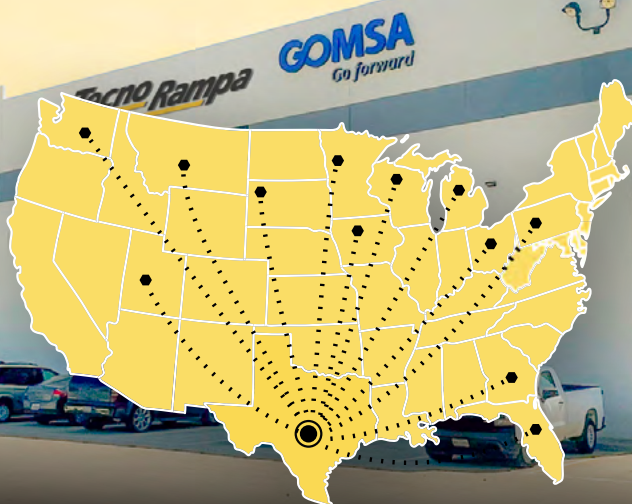


ATTENTION



SERVICE

TecnoRampa®



GOMSA
Go forward

tecnorampa.us

Rhinolifts llc



LLC
AMERICAN
COMPANY

TecnoRampa



TECNORAMPA LLC

Toll free:
(800) 6230 332
30-Line Telephone
Switchboard (427) 272 8119, (427) 272 4041

1586 N Goldenrod Road, Orlando, Florida

www.tecnorampa.us

